

# ROWAN



## KAROO

By Lisa Richardson

ZB227-00005

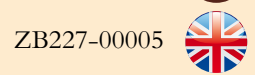
v.1





# KAROO

by Lisa Richardson



v.1

## SIZE

To fit bust

81-86	91-97	102-107	112-117	122-127	cm
32-34	36-38	40-42	44-46	48-50	in

Actual bust measurement of garment

112	122	132	142	152	cm
44	48	52	56	60	in

## YARN

### Camello

A Tapestry 007					
8	9	10	10	11	x 25gm
B India 005					
3	4	4	4	4	x 25gm
C Rich Red004					
4	4	4	4	5	x 25gm
D Stone 002					
2	3	3	3	3	x 25gm
E Eden		009			
3	3	3	4	4	x 25gm
F Fig		006			
3	3	3	3	4	x 25gm

More Yarn  
Information

on [knitrowan.com](http://knitrowan.com)

## NEEDLES

1 pair 3¼mm (no 10) (US 3) needles

1 pair 4mm (no 8) (US 6) needles

3¼mm (no 10) (US 3) circular needle at least 120 cm long

**BUTTONS** - 7 x BN1533 from Bedecked. Reverse side used.

## TENSION

32 sts and 35 rows to 10 cm measured over patterned st st using 4mm (US 6) needles.

## BACK

Using 3¼mm (US 3) needles and yarn A cast on 178 [194: 210: 226: 242] sts.

**Row 1 (RS):** K2, \*P2, K2, rep from \* to end.

**Row 2:** P2, \*K2, P2, rep from \* to end.

These 2 rows form rib.

Work in rib for a further 16 rows, inc 1 st at end of last row and

ending with RS facing for next row. 179 [195: 211: 227: 243] sts.

Change to 4mm (US 6) needles.

Beg and ending rows as indicated, using the **fairisle** technique as described on the information page and repeating the 64 row patt repeat throughout, cont in patt from chart, which is worked entirely in st st beg with a K row, as folls:

Cont straight until back meas 70 [70.5: 71: 71.5: 72] cm, ending with RS facing for next row.

## Shape armholes

Keeping patt correct, cast off 11 [12: 13: 14: 15] sts at beg of next 2 rows. 157 [171: 185: 199: 213] sts.

Dec 1 st at each end of next 9 [11: 13: 13: 15] rows, then on foll 10 [12: 12: 14: 14] alt rows. 119 [125: 135: 145: 155] sts.

Cont straight until armhole meas 22 [23.5: 25: 26.5: 28] cm, ending with RS facing for next row.

## Shape shoulders and back neck

**Next row (RS):** Cast off 5 [6: 7: 8: 9] sts, patt until there are 30 [32: 35: 39: 42] sts on right needle and turn, leaving rem sts on a holder. Work each side of neck separately.

Dec 1 st at neck edge of next 6 rows **and at same time** cast off 6 [6: 7: 8: 9] sts at beg of 2nd and foll 2 [1: 2: 2: 2] alt rows, then - [7: -: -: -] sts at beg of foll - [1: -: -: -] alt row.

Work 1 row.

Cast off rem 6 [7: 8: 9: 9] sts.

With RS facing, slip centre 49 [49: 51: 51: 53] sts onto a holder, rejoin yarns and patt to end.

Complete to match first side, reversing shapings.

## POCKET BAGS (make 2)

Using 4mm (US 6) needles and yarn A cast on 41 [41: 44: 44: 48] sts. Beg with a K row, work in st st for 113 [113: 117: 117: 121] rows, ending with **WS** facing for next row.

**Next row (WS):** P2 [2: 4: 4: 3], M1, (P6 [6: 5: 5: 6], M1) 6 [6: 7: 7: 7] times, P3 [3: 5: 5: 3]. 48 [48: 52: 52: 56] sts.

Break yarn and leave sts on a holder.

## LEFT FRONT

Using 3¼mm (US 3) needles and yarn A cast on 87 [95: 103: 111: 119] sts.

**Row 1 (RS):** K2, \*P2, K2, rep from \* to last st, K1.

**Row 2:** K1, P2, \*K2, P2, rep from \* to end.

These 2 rows form rib.

Work in rib for a further 16 rows, inc 1 st at each end of last row and ending with RS facing for next row. 89 [97: 105: 113: 121] sts.

Change to 4mm (US 6) needles.

Beg and ending rows as indicated, cont in patt from chart as folls:  
Work 128 rows, ending after chart row 64 and with RS facing for next row.

#### Place pocket

**Next row (RS):** Patt 13 [16: 17: 20: 21] sts, slip next 48 [48: 52: 52: 56] sts onto a holder (for pocket top) and, in their place, patt across 48 [48: 52: 52: 56] sts of first pocket lining, patt rem 28 [33: 36: 41: 44] sts.

Cont straight until 28 rows less have been worked than on back to beg of armhole shaping, ending with RS facing for next row.

#### Shape front slope

Keeping patt correct, dec 1 st at end of next and foll 10 [8: 7: 5: 4] alt rows, then on 1 [2: 3: 4: 4] foll 4th rows. 77 [86: 94: 103: 112] sts. Work 3 [3: 1: 1: 3] rows, ending with RS facing for next row.

#### Shape armhole

Keeping patt correct, cast off 11 [12: 13: 14: 15] sts at beg and dec 1 [1: 0: 0: 1] st at end of next row. 65 [73: 81: 89: 96] sts.

Work 1 row.

Dec 1 st at armhole edge of next 9 [11: 13: 13: 15] rows, then on foll 10 [12: 12: 14: 14] alt rows **and at same time** dec 1 st at front slope edge on 3rd [3rd: next: next: 3rd] and 6 [8: 9: 10: 10] foll 4th rows. 39 [41: 46: 51: 56] sts.

Dec 1 st at front slope edge **only** on 2nd [4th: 4th: 4th: 4th] and 9 [8: 9: 9: 10] foll 4th rows. 29 [32: 36: 41: 45] sts.

Cont straight until left front matches back to beg of shoulder shaping, ending with RS facing for next row.

#### Shape shoulder

Cast off 5 [6: 7: 8: 9] sts at beg of next and foll 0 [2: 3: 3: 3] alt rows, then 6 [7: -: -: -] sts at beg of foll 3 [1: -: -: -] alt rows.

Work 1 row.

Cast off rem 6 [7: 8: 9: 9] sts.

#### RIGHT FRONT

Using 3¼mm (US 3) needles and yarn A cast on 87 [95: 103: 111: 119] sts.

**Row 1 (RS):** K3, \*P2, K2, rep from \* to end.

**Row 2:** P2, \*K2, P2, rep from \* to last st, K1.

These 2 rows form rib.

Work in rib for a further 16 rows, inc 1 st at each end of last row and ending with RS facing for next row. 89 [97: 105: 113: 121] sts.

Change to 4mm (US 6) needles.

Beg and ending rows as indicated, cont in patt from chart as folls:

Work 128 rows, ending after chart row 64 and with RS facing for next row.

#### Place pocket

**Next row (RS):** Patt 28 [33: 36: 41: 44] sts, slip next 48 [48: 52: 52: 56] sts onto a holder (for pocket top) and, in their place, patt across 48 [48: 52: 52: 56] sts of second pocket lining, patt rem 13 [16: 17: 20: 21] sts.

Complete to match left front, reversing shapings.

#### SLEEVES

Using 3¼mm (US 3) needles and yarn A cast on 50 [50: 54: 54: 58] sts.

Work in rib as given for back for 17 rows, ending with **WS** facing for next row.

**Row 18 (WS):** Rib 5 [3: 5: 5: 7], M1, (rib 2, M1) 20 [22: 22: 22: 22] times, rib 5 [3: 5: 5: 7]. 71 [73: 77: 77: 81] sts.

Change to 4mm (US 6) needles.

Beg and ending rows as indicated and **beg with chart row 21**, cont in patt from chart as folls:

Inc 1 st at each end of 5th and every foll 6th row to 93 [103: 103: 119: 123] sts, then on every foll 8th row until there are 109 [113: 117: 121: 125] sts, taking inc sts into patt.

Cont straight until sleeve meas approx 46 [46: 47: 47: 47] cm, ending after same chart row as on back to beg of armhole shaping and with RS facing for next row.

#### Shape top

Keeping patt correct, cast off 11 [12: 13: 14: 15] sts at beg of next 2 rows. 87 [89: 91: 93: 95] sts.

Dec 1 st at each end of next 3 rows, then on foll 3 alt rows, then on 4 foll 4th rows. 67 [69: 71: 73: 75] sts.

Work 1 row.

Dec 1 st at each end of next and every foll alt row until 53 sts rem, then on foll 11 rows, ending with RS facing for next row. 31 sts.

Cast off 6 sts at beg of next 2 rows.

Cast off rem 19 sts.

#### MAKING UP

Press as described on the information page.

Join both shoulder seams using back stitch, or mattress stitch if preferred.

#### Front band

With RS facing, using 3¼mm (US 3) circular needle and yarn A, beg and ending at cast-on edges, pick up and knit 184 [184: 184: 190: 190] sts up right front opening edge to beg of front slope shaping, 107 [111: 116: 120: 127] sts up right front slope, and 7 sts down right side of back neck, K across 49 [49: 51: 51: 53] sts on back holder dec 1 st at centre, then pick up and knit 7 sts up left side of back neck, 107 [111: 116: 120: 127] sts down left front slope to beg of front slope shaping, and 184 [184: 184: 190: 190] sts down left front opening edge. 644 [652: 664: 684: 700] sts.

**Row 1 (WS):** K1, P2, \*K2, P2, rep from \* to last st, K1.

**Row 2:** K3, \*P2, K2, rep from \* to last st, K1.

These 2 rows form rib.

Work in rib for a further 3 rows, ending with RS facing for next row.

**Row 6 (RS):** Rib 6, \*work 2 tog, yrn (to make a buttonhole), rib 27 [27: 27: 28: 28], rep from \* 5 times more, work 2 tog, yrn (to make 7th buttonhole), rib to end.

Work in rib for a further 5 rows, ending with RS facing for next row.

Cast off in rib.

#### Pocket tops (both alike)

Slip 48 [48: 52: 52: 56] sts from pocket holder onto 3¼mm (US 3) needles, rejoin yarn A with RS facing and K to end.

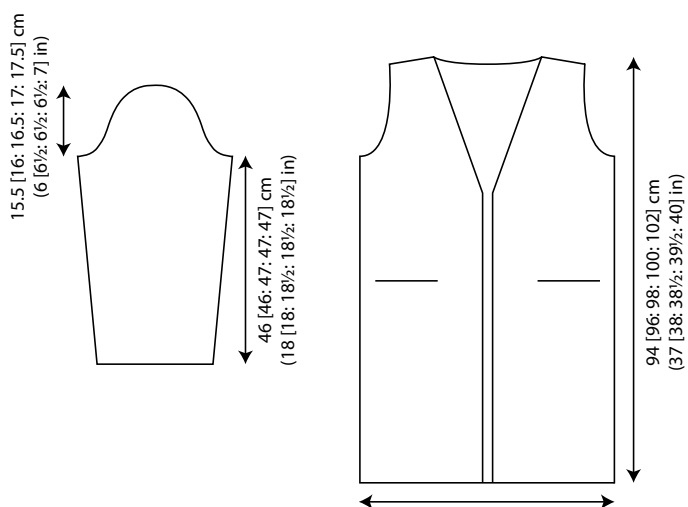
Beg with row 1, work in rib as given for front band for 11 rows,

ending with RS facing for next row.

Cast off in rib.

Fold each pocket bag in half so that cast-on edge matches pocket top pick-up row and neatly sew in place. Join side (row-end) edges of pocket bags.

See information page for finishing instructions, setting in sleeves using the set-in method.



**Information  
Pages**

Key

- ◻ A
- ◻ B
- ⊗ C
- ◻ D
- ▲ E
- ◻ F

